



**INDIAN SCHOOL AL WADI AL KABIR**  
DEPARTMENT OF MATHEMATICS (2021-2022)

TOPIC: GRAPHS









WORKSHEET

RESOURCE PERSON: MS. BINDU JOHN

NAME \_\_\_\_\_ CLASS V SEC \_\_\_\_\_

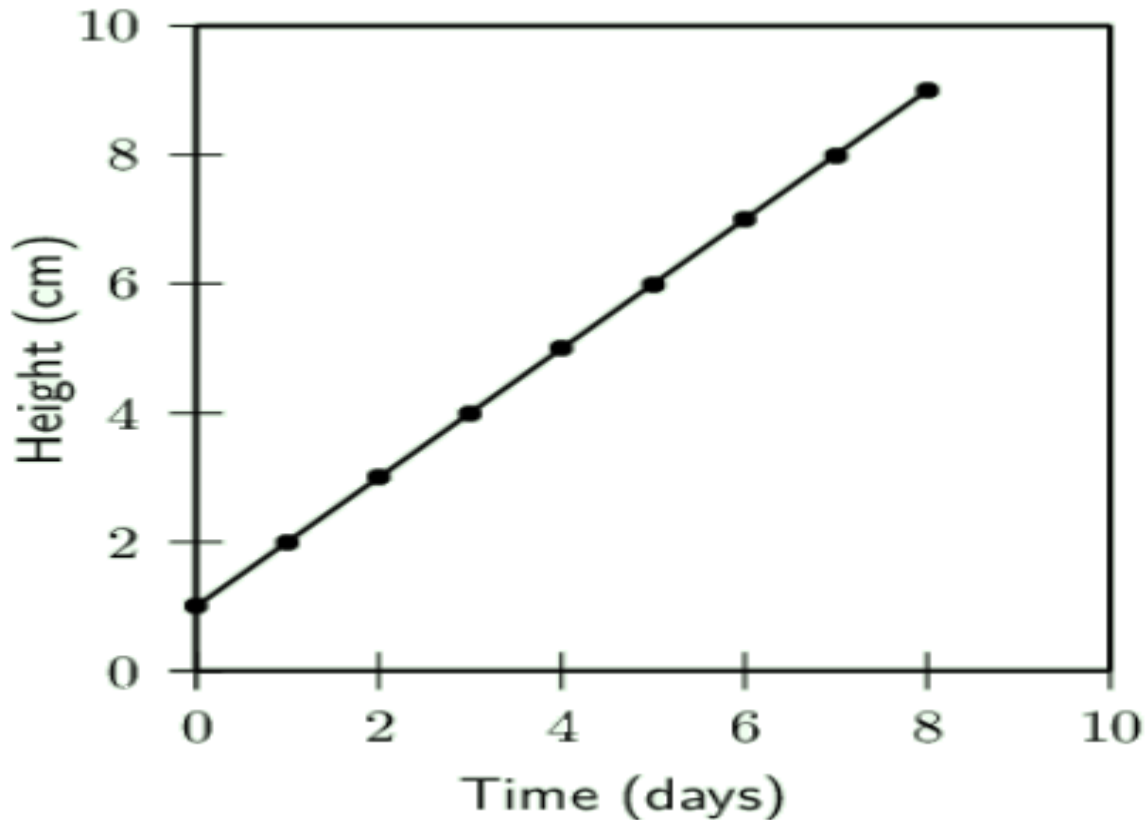
DATE: \_\_\_\_\_

**Q1. Molly and her friends are fascinated to watch insects. They set out for Insect scavenger hunt one day. Observe and understand the given Tally Mark Chart prepared by them, complete the last column of the table and answer the questions that follow.**

INSECT SCAVENGER HUNT		
TALLY CHART		
Insect	Tallies	Total
Ladybug 		
Ant 		
Butterfly 		
Mosquito 		

- a) Which insect was sighted the most in number? \_\_\_\_\_
- b) Which insect found was the least in number? \_\_\_\_\_
- c) How many less ladybugs were there as compared to ants? \_\_\_\_\_
- d) Total number of insects sighted altogether  
= \_\_\_\_\_

**Q2. Nitin was excited to grow coriander plant as part of an EVS activity. He decided to take care of the plant by watering it and measure its height for a span of ten days. Based on his observations, he prepared a Line Graph. Study the Line graph and answer the questions that follow.**



- a) What was the height of the plant on the fourth day? \_\_\_\_\_
- b) On which day was the height recorded as 8 cm? \_\_\_\_\_
- c) Nitin started observing the plant when it was just \_\_\_\_\_ cm high.
- d) The plant was growing higher by \_\_\_\_\_ cm every day.
- e) On the 7<sup>th</sup> day, the height of the plant was \_\_\_\_\_ cm.

**Q3. Represent the audiences for the movie Spiderman using Tally mark.**

Day	Sunday	Monday	Friday	Saturday
Number of audiences	4	6	21	16
Tally Marks				

**Why was the number of audiences least on Sunday and most on Friday?**

---

**Q4. The Circle Graph below shows the favourite musical instruments of 80 students. G represents Guitar, F-Flute, V-Violin and S-Saxophone. Answer the questions based on the data.**

1. Which is / are the most preferred instrument(s)?

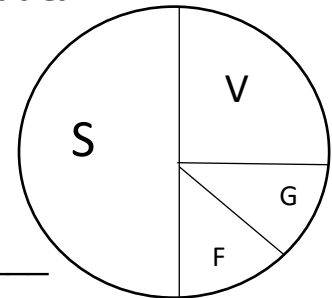
2. Which is / are the least preferred instrument(s)?

3. How many students like Saxophone? \_\_\_\_\_

4. What is the fraction represented for Violin? \_\_\_\_\_

5. Equally liked instruments are \_\_\_\_\_ and \_\_\_\_\_.

6. Complete the following table.



Musical Instrument	Fraction of students who like it	Number of students who like it	Tally Marks
Guitar			
Flute			
Violin			
Saxophone			